

AgW, AgWC, AgWCC, AgC, CuW
Sintered Contacts Group



/ Sintered Contacts Group (AgW, AgWC, AgWCC, AgC, CuW)

Scope: This information refers to sintered electrical contact tips manufactured by press-sinter-infiltration (PSI) or press-sinter-repress (PSR) process. Contact tips are available with brazeable underlayer in form of an infiltration excess (PSI) or discrete underlayer (PSR), and optionally with an additional layer of brazing alloy.

Applications

- Circuit breakers (MCCB, ACB, MCB, RCCB, AFCI, GFCI, ...)

Delivery forms

- contact tip

Characteristics

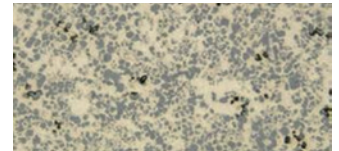
- Lowest erosion rates based on refractory metal (tungsten) and carbides
- Excellent anti-welding properties for graphite containing materials

Physical Properties

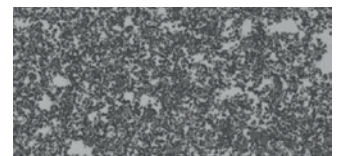
Material	Density	Electrical Conductivity	Hardness
	[g/cm ³]	[m/(Ω ·mm ²)]	[Vickers]
AgW50 – AgW68	12,9 – 15,4	19 – 39	19 – 39
AgWC40 – AgWC60	11,6 – 13,3	18 – 30	140 – 340
AgWC16C2 AgWC17C3 AgWC19C1 AgWC28C2	9,1 – 10,5	23 – 43	35 – 65
AgNi2C4	8,4 – 9,0	25 – 35	38 – 56
AgC2.5	8,6 – 9,4	25 – 35	17 – 39
CuW60 – CuW80	12,7 – 16,3	14 – 34	130 – 280

* typical compositions, others possible upon request

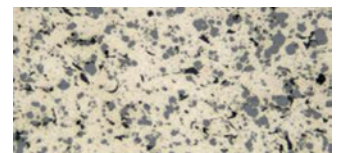
Microstructure/Cross section



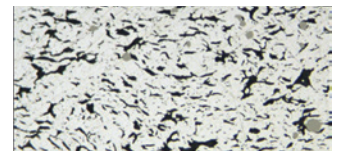
AgW50



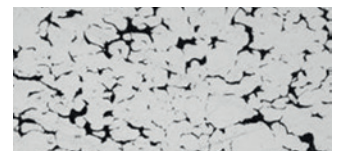
AgWC40



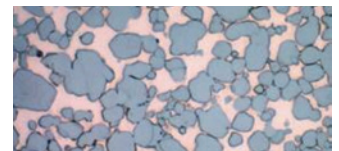
AgWC16C2



AgNi2C4



AgC2.5



CuW80